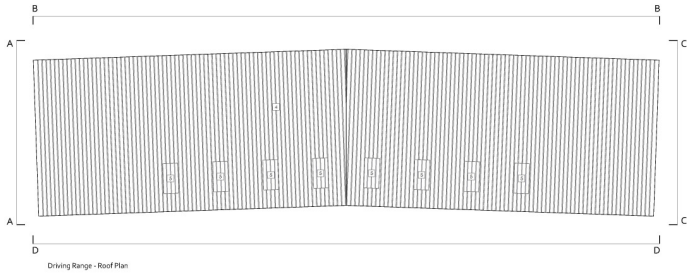
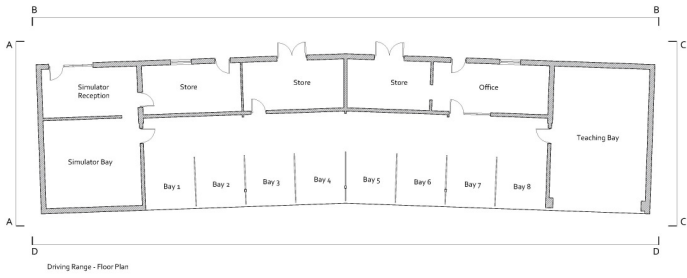


© Wildblood Macdonald Architects Ltd. All Rights Reserved. This drawing is the property of Wildblood Macdonald Architects Ltd. and is not to be reproduced, stored in a retrieval system, or transmitted in any form or by any means, electronic, mechanical, photocopying, recording, or by any information storage and retrieval system, without the prior written permission of Wildblood Macdonald Architects Ltd.



- Materials Key:
1. Vertical Boarded Timber Cladding
 2. Profiled Sheet Metal Roofing
 3. Painted Timber Doors
 4. Timber Double Glazed Casement Windows
 5. Polycarbonate Rooflights
 6. Metal Roller Shutter Door

wildblood macdonald
 Parkhill Studio, Parkhill, Wildblood Road
 York YO1 1JZ
 01904 252525
 www.wildblood-macdonald.com

DATE VALUED 03/04/2018

THIS COPY HAS BEEN MADE BY OR WITH THE AUTHORITY OF RYedale DISTRICT COUNCIL PURSUANT TO SECTION 87 OF THE COPYRIGHT DESIGNS AND PATENTS ACT 1988. UNLESS THAT ACT PROVIDES A RELEVANT EXCEPTION TO COPYRIGHT, THE COPY MUST NOT BE COPIED WITHOUT THE PRIOR PERMISSION OF THE COPYRIGHT OWNER.

Client	Sandburn York Ltd.	Project	New Hotel & Staff Accommodation Sandburn Hall Flaxton	Project No.	2464 (PL)7	Drawn	BJ
Project Title	Proposed Driving Range	Scale	1:500 @ A4	Discipline	PLANNING	Checked	SCF
Date	Feb 2018	Author		Discipline		Checked	